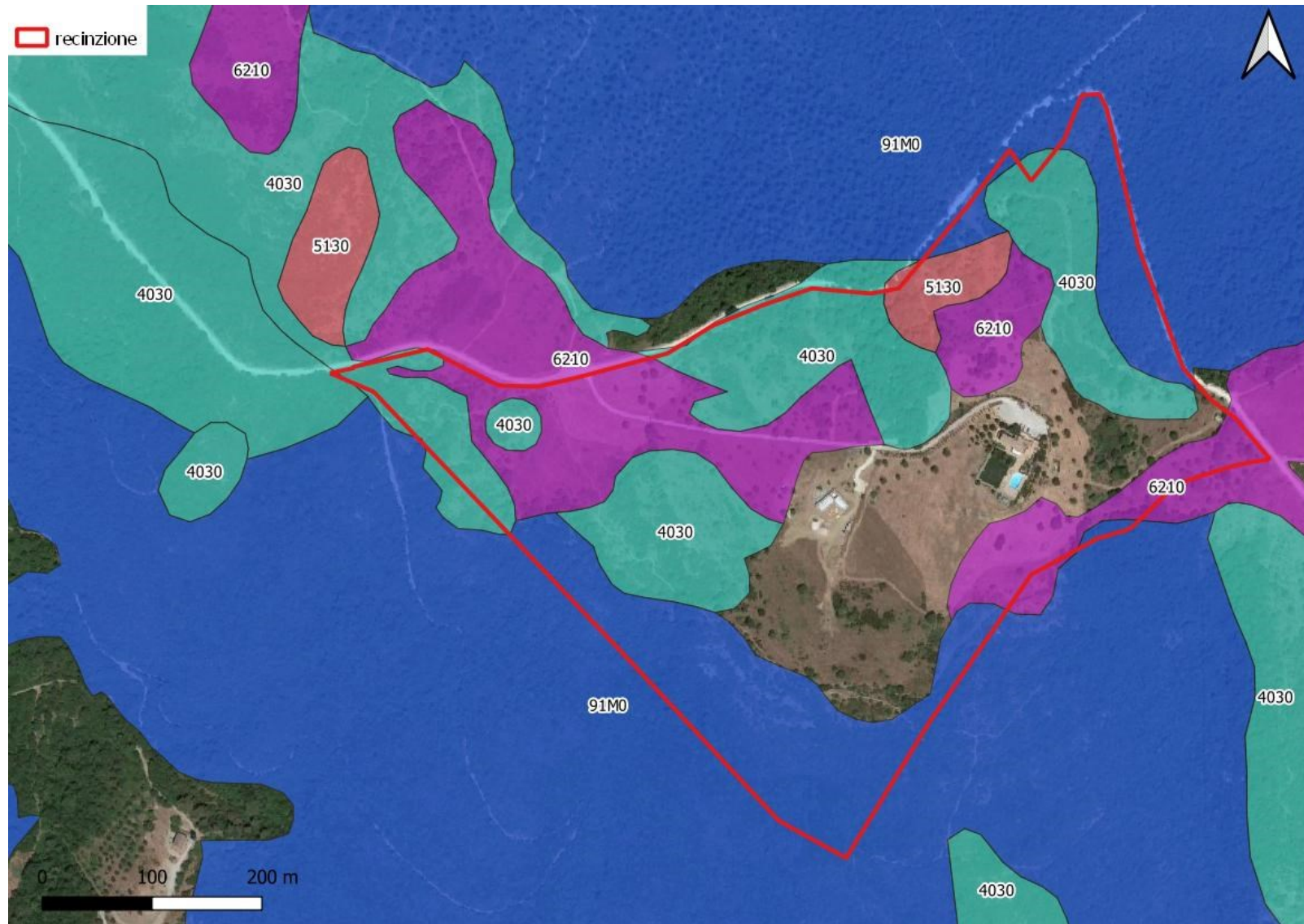
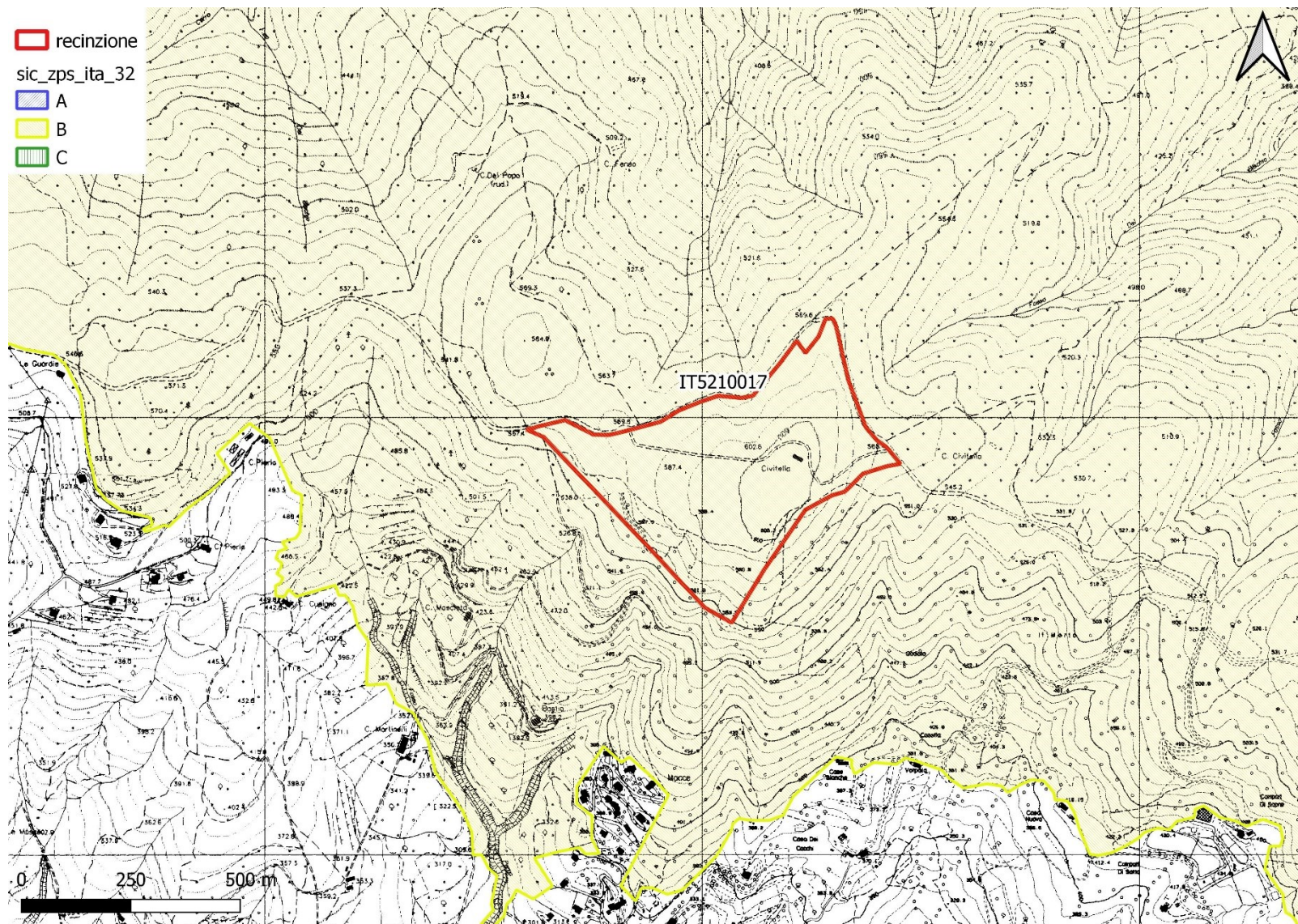


This topographic map depicts the Civitella del Tronto area, characterized by blue contour lines indicating elevation. The map features several land parcels outlined in red, with some parcels labeled with numbers such as 4030, 5130, and 6210. A prominent red line traces a boundary across the landscape. The map includes a legend in the top left corner, a scale bar at the bottom left, and a north arrow in the top right corner. The name 'Civitella' is clearly visible in the center-right portion of the map.







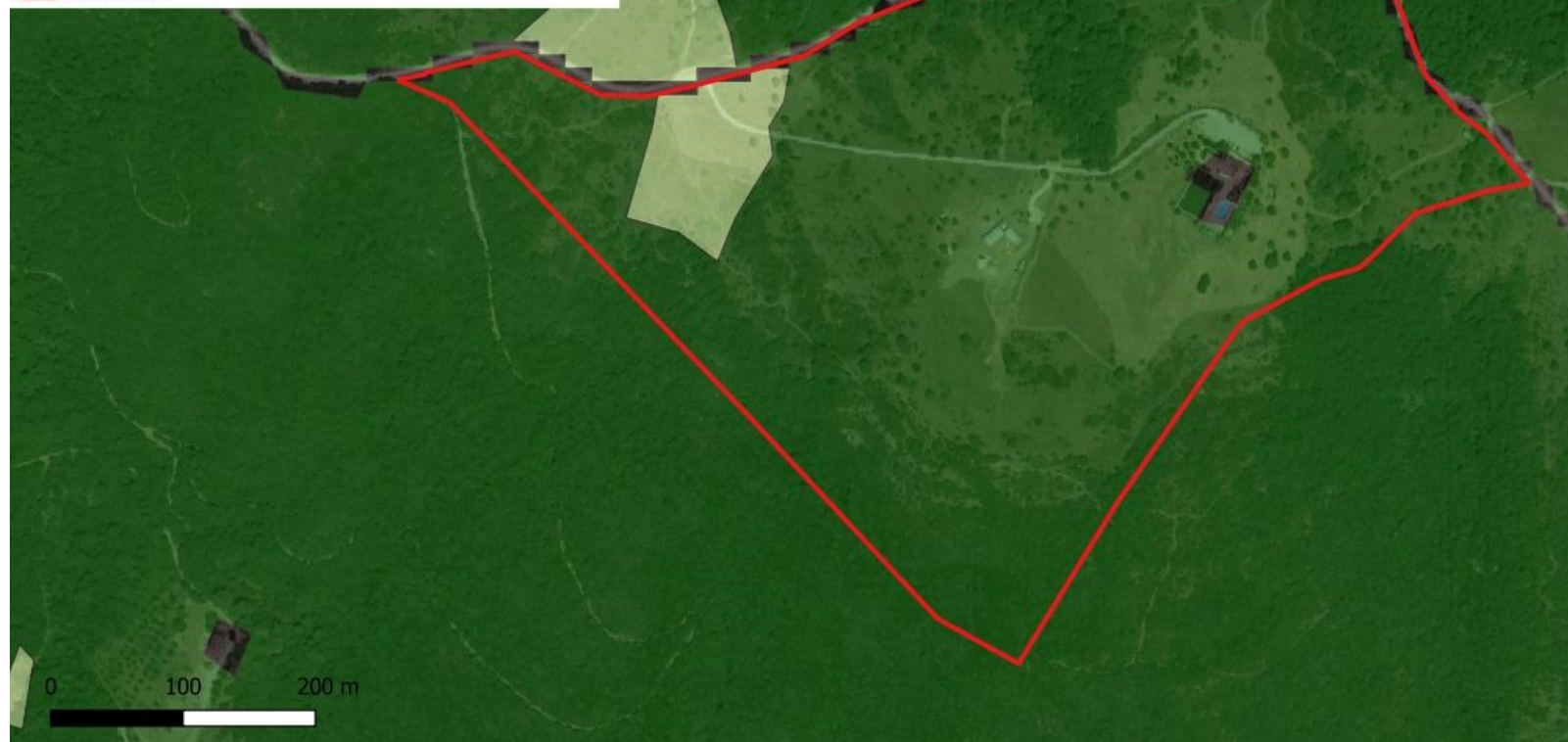






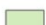








reru

- Barriere antropiche
- Unità Regionali di Connessione Ecologica (Habitat)
- Unità Regionali di Connessione Ecologica (Connettività)
- Corridoi e pietre di Guado (Habitat)
- Corridoi e pietre di Guado (Connettività)
- Frammenti (Habitat)
- Frammenti (Connettività)
- Matrice
- recinzione



reru

-  Barriere antropiche
-  Unità Regionali di Connessione Ecologica (Habitat)
-  Unità Regionali di Connessione Ecologica (Connettività)
-  Corridoi e pietre di Guado (Habitat)
-  Corridoi e pietre di Guado (Connettività)
-  Frammenti (Habitat)
-  Frammenti (Connettività)
-  Matrice
-  recinzione

